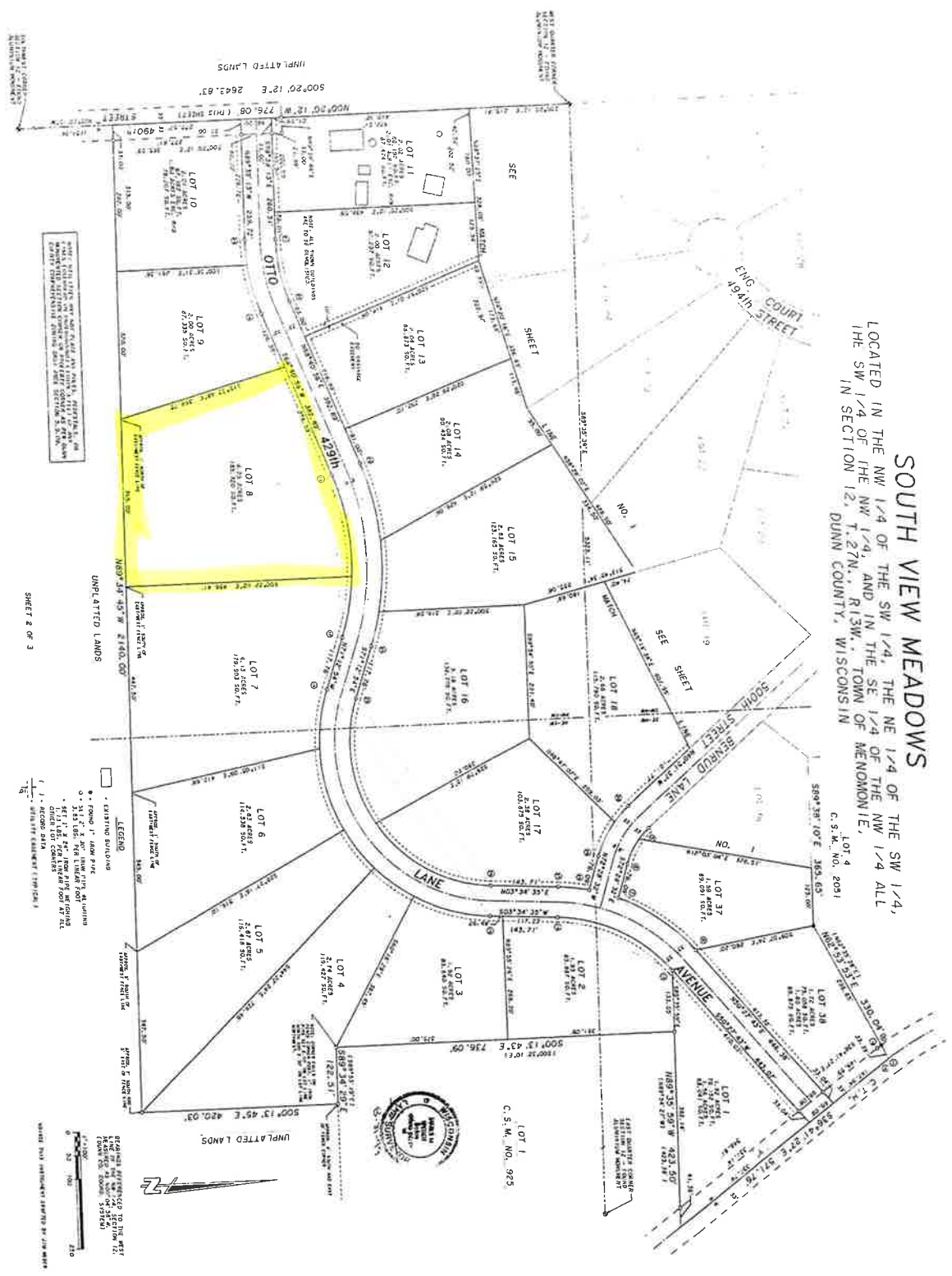


SOUTH VIEW MEADOWS
 LOCATED IN THE NW 1/4 OF THE SW 1/4, THE NE 1/4 OF THE SW 1/4,
 THE SW 1/4 OF THE NW 1/4, AND IN THE SE 1/4 OF THE NW 1/4 ALL
 IN SECTION 12, T. 27N., R. 13W., TOWN OF MENOMONIE,
 DUNN COUNTY, WISCONSIN



NOTE: THIS PLAT IS NOT TO BE CONSIDERED AS A FINAL SURVEY UNLESS IT IS APPROVED BY THE LOCAL GOVERNMENT AND THE STATE OF WISCONSIN. THE LOCAL GOVERNMENT SHALL BE RESPONSIBLE FOR THE ACCURACY OF THE PLAT AND THE STATE OF WISCONSIN SHALL BE RESPONSIBLE FOR THE ACCURACY OF THE SURVEY.

SHEET 2 OF 3

UNPLATTED LANDS

UNPLATTED LANDS

UNPLATTED LANDS

UNPLATTED LANDS

UNPLATTED LANDS

UNPLATTED LANDS

UNPLATTED LANDS

UNPLATTED LANDS

UNPLATTED LANDS

UNPLATTED LANDS

UNPLATTED LANDS

UNPLATTED LANDS

UNPLATTED LANDS

UNPLATTED LANDS

UNPLATTED LANDS

UNPLATTED LANDS

UNPLATTED LANDS

UNPLATTED LANDS

UNPLATTED LANDS

UNPLATTED LANDS

UNPLATTED LANDS

UNPLATTED LANDS

UNPLATTED LANDS

UNPLATTED LANDS

UNPLATTED LANDS

UNPLATTED LANDS

UNPLATTED LANDS

UNPLATTED LANDS

UNPLATTED LANDS

UNPLATTED LANDS

UNPLATTED LANDS

UNPLATTED LANDS

UNPLATTED LANDS

