

IN TOWN OF RED CEDAR.  
 DUNN COUNTY - WIS  
 Survey, and map made Sept. 14<sup>th</sup> 15<sup>th</sup> 1948.  
 IN CEDAR FALL Map showing 13

Parcel of Land Located  
 on a part of Gov. Lots 3-4 Sec. 6  
 T. 28. N. R. 12. West

TOWNSHIP. Line.

Red. Cedar. Town. 28. N. R. 12. W

929 Feet West  
 of the North East  
 Corner of Gov. Lot 4.  
 Sec. 6. T. 28 N. R.  
 12. West

Highway.

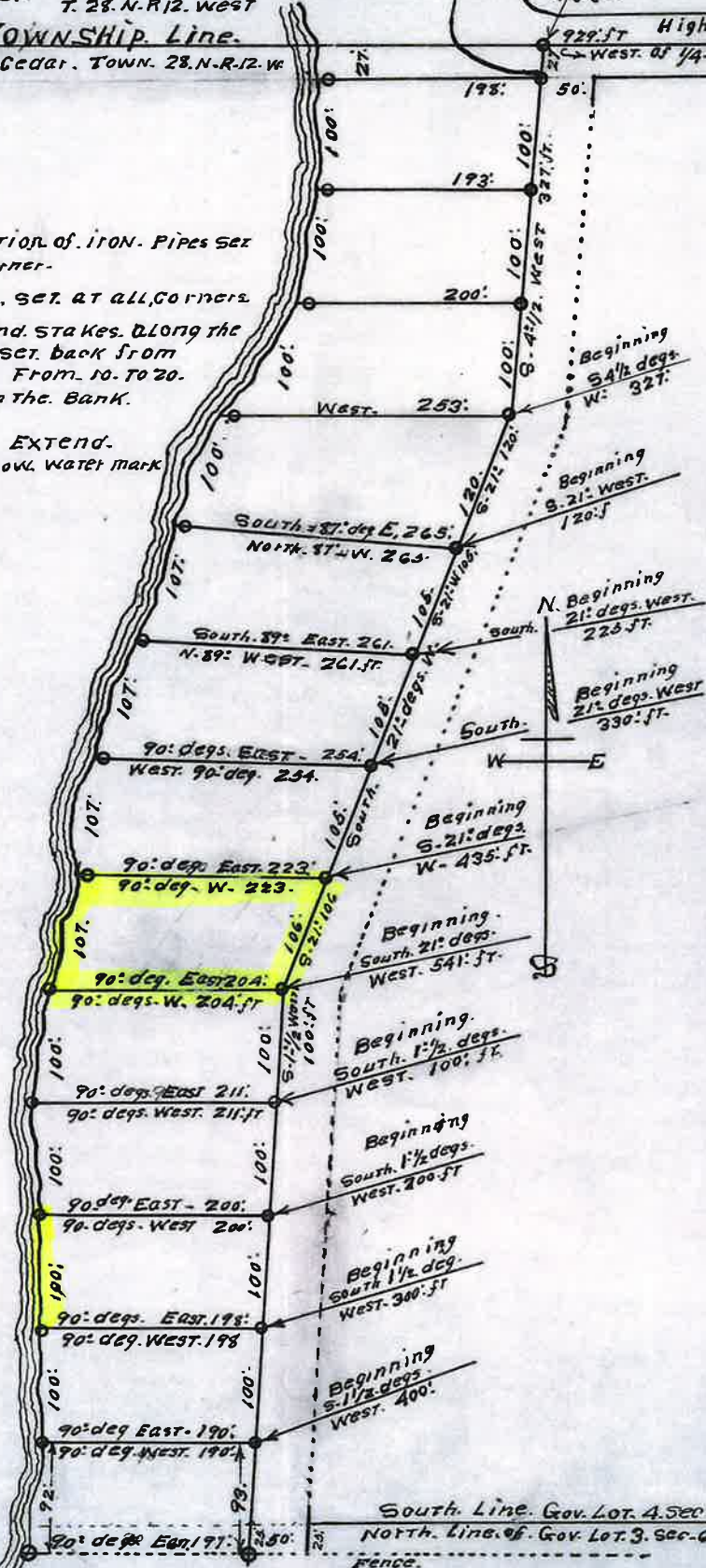
West of 1/4-sec. Corner.

denotation of iron pipes set  
 at all corners.

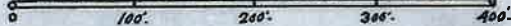
□ → stakes, set at all corners

The pipes and stakes along the  
 River are set back from  
 the water from 10 to 20  
 feet up on the bank.

All Lines Extend  
 down to low water mark



Scale, 1. Inch = 100 Feet



by  
 W. A. Harding.  
 County Surveyor.

M-614