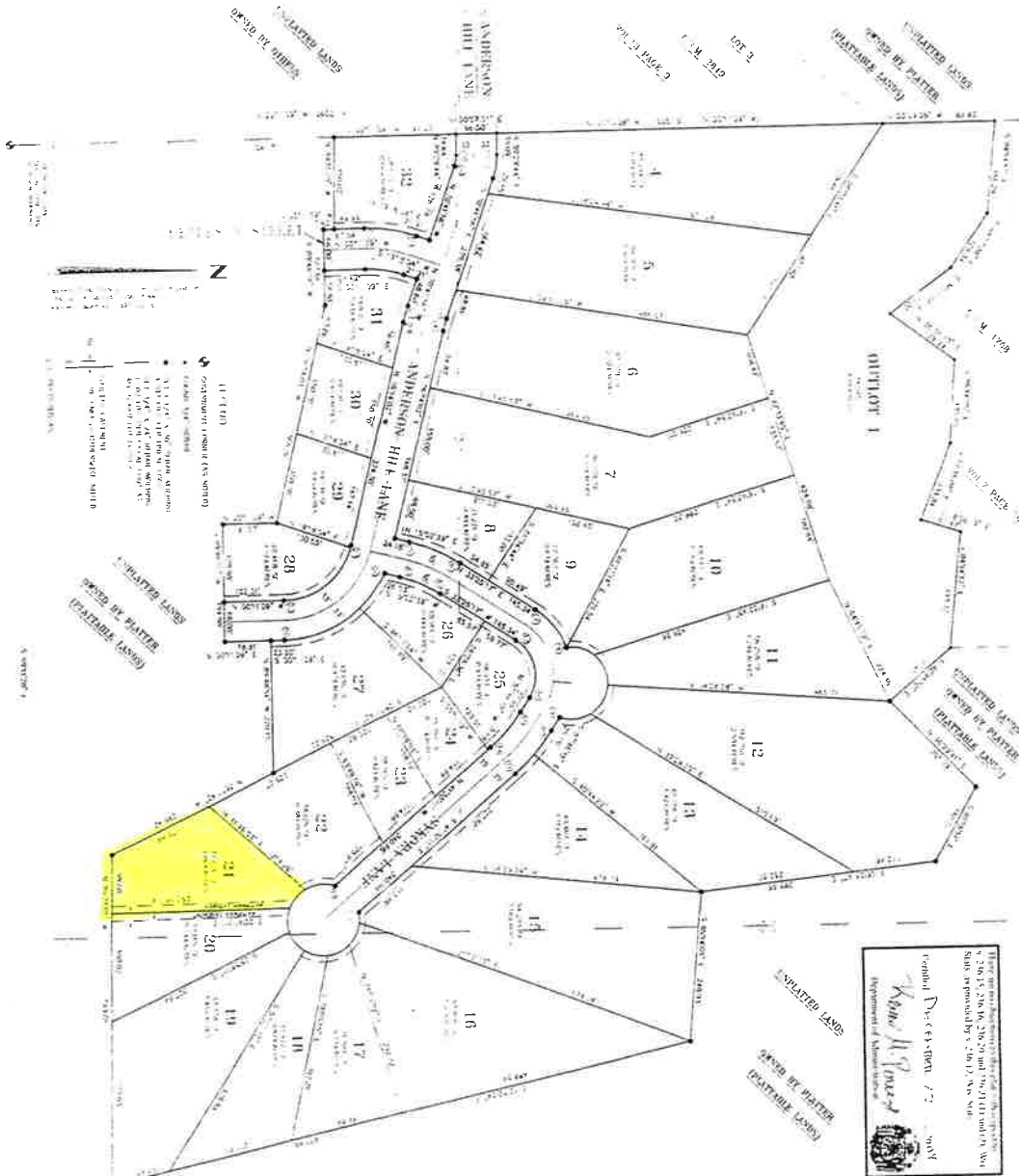


LOCATED IN THE NORTHEAST 1/4 OF THE SOUTHEAST 1/4, THE NORTHEAST 1/4 OF THE SOUTHEAST 1/4, THE SOUTHWEST 1/4 OF THE SOUTHEAST 1/4 OF THE SOUTHEAST 1/4, AND THE NORTHEAST 1/4 OF THE SOUTHWEST 1/4, SECTION 36, TOWNSHIP 30 NORTH, RANGE 14 WEST, VILLAGE OF ROYCEVILLE, DUNN COUNTY, WISCONSIN



DOCUMENT NUMBER 519829  
REC'D JANUARY 14, 2005 PM 9 30AM  
RECORDED VOLUME 8 PAGES PAGE 62  
JANUARY 14, 2005  
JAMES M. MCKINLEY, JR. AKA OF DEEDS FOUND TO W/L

