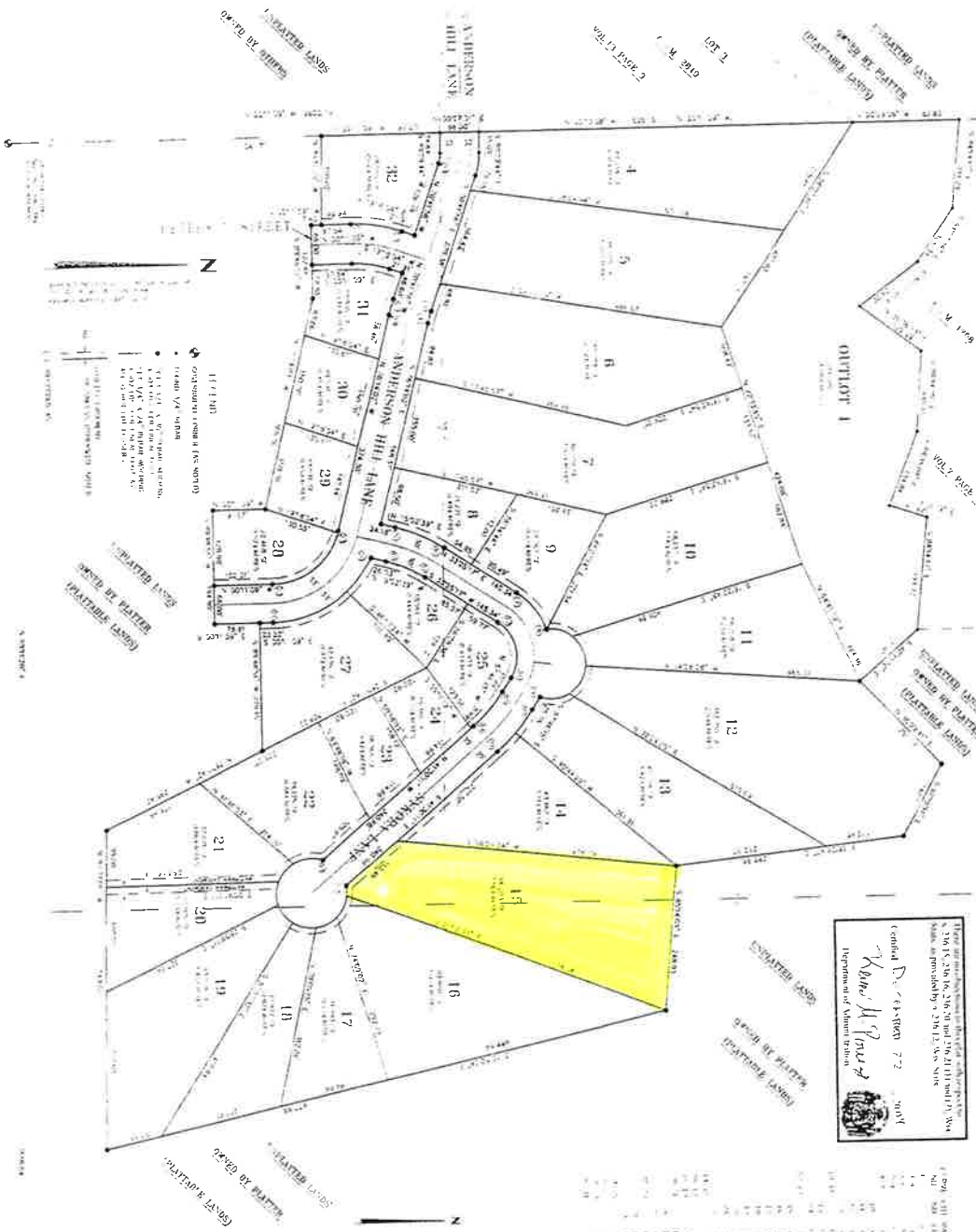


ANDERSON HILL ADDITION

LOCATED IN THE NORTHEAST 1/4 OF THE SOUTHEAST 1/4, THE NORTHWEST 1/4 OF THE SOUTHEAST 1/4, AND THE SOUTHWEST 1/4 OF THE SOUTHEAST 1/4, OF THE SOUTHWEST 1/4, AND THE NORTHWEST 1/4 OF THE SOUTHWEST 1/4, SECTION 36, TOWNSHIP 30 NORTH, RANGE 14 WEST, VILLAGE OF BOYCEVILLE, DUNN COUNTY, WISCONSIN



These are the original maps on which this plat is based and are on file in the office of the Register of Deeds, Dunn County, Wisconsin, at the office of the Register of Deeds, Dunn County, Wisconsin, at the office of the Register of Deeds, Dunn County, Wisconsin.

Recorded in Volume 8, Page 106 of the Register of Deeds, Dunn County, Wisconsin, on the 14th day of August, 2005.

Notary Public for Wisconsin

Kathy H. G. G. G.

Department of Natural Resources

document number 519829
 rec'd - August 14, 2005, at 9:30 AM
 recorded Volume 8, Page 106 of the
 Register of Deeds, Dunn County, Wisconsin
 James M. Merrill, Registrar

GENERAL DATA TABLE

Lot No.	Area (Ac.)	Area (Sq. Ft.)	Area (Sq. Yds.)	Area (Sq. M.)
1	0.10	6,917	7,800	2,812
2	0.10	6,917	7,800	2,812
3	0.10	6,917	7,800	2,812
4	0.10	6,917	7,800	2,812
5	0.10	6,917	7,800	2,812
6	0.10	6,917	7,800	2,812
7	0.10	6,917	7,800	2,812
8	0.10	6,917	7,800	2,812
9	0.10	6,917	7,800	2,812
10	0.10	6,917	7,800	2,812
11	0.10	6,917	7,800	2,812
12	0.10	6,917	7,800	2,812
13	0.10	6,917	7,800	2,812
14	0.10	6,917	7,800	2,812
15	0.10	6,917	7,800	2,812
16	0.10	6,917	7,800	2,812
17	0.10	6,917	7,800	2,812
18	0.10	6,917	7,800	2,812
19	0.10	6,917	7,800	2,812
20	0.10	6,917	7,800	2,812
21	0.10	6,917	7,800	2,812
22	0.10	6,917	7,800	2,812
23	0.10	6,917	7,800	2,812
24	0.10	6,917	7,800	2,812
25	0.10	6,917	7,800	2,812
26	0.10	6,917	7,800	2,812
27	0.10	6,917	7,800	2,812
28	0.10	6,917	7,800	2,812
29	0.10	6,917	7,800	2,812
30	0.10	6,917	7,800	2,812
31	0.10	6,917	7,800	2,812
32	0.10	6,917	7,800	2,812

NOTARY PUBLIC FOR WISCONSIN

Kathy H. G. G. G.

Department of Natural Resources

14 AUG 2005 9:30 AM

RECORDED IN VOLUME 8, PAGE 106 OF THE REGISTER OF DEEDS, DUNN COUNTY, WISCONSIN

14 AUG 2005 9:30 AM

14 AUG 2005 9:30 AM

