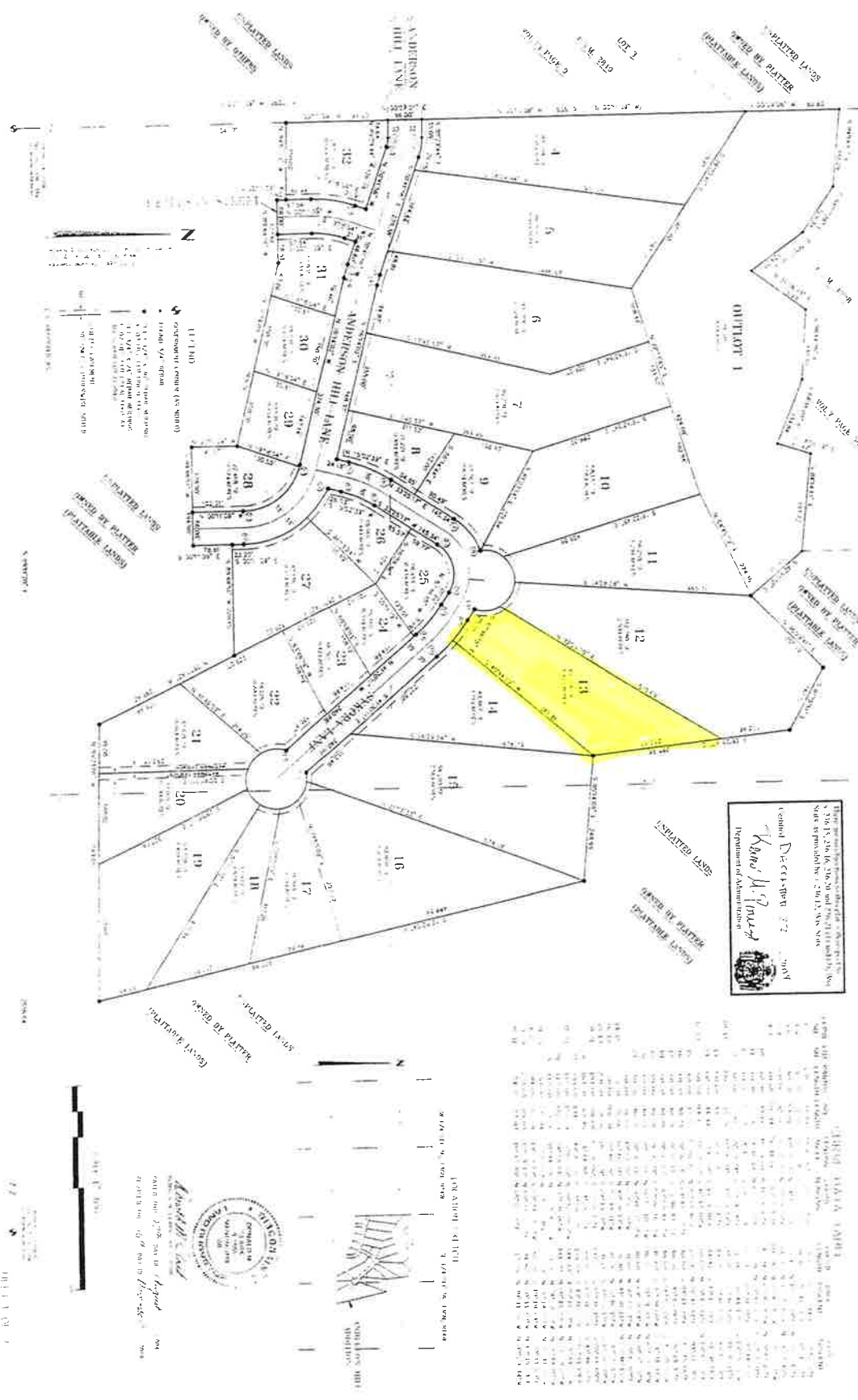


# ANDERSON HILL ADDITION

LOCATED IN THE NORTHEAST 1/4 OF THE SOUTHEAST 1/4, THE NORTHWEST 1/4 OF THE SOUTHEAST 1/4, THE SOUTHWEST 1/4 OF THE SOUTHEAST 1/4, AND THE SOUTHWEST 1/4 OF THE SOUTHWEST 1/4, SECTION 36, TOWNSHIP 30 NORTH, RANGE 14 WEST, VILLAGE OF BOYCEVILLE, DUNN COUNTY, WISCONSIN



DOCUMENT NUMBER 519829  
REL. D. JUNE 24, 2005 AT 9:30 AM  
RECORDED VOLUME 8 PAGES 62A-62B  
INDEXED IN PUBLIC REL. OF RECORDS, DUNN CO. WIS.

