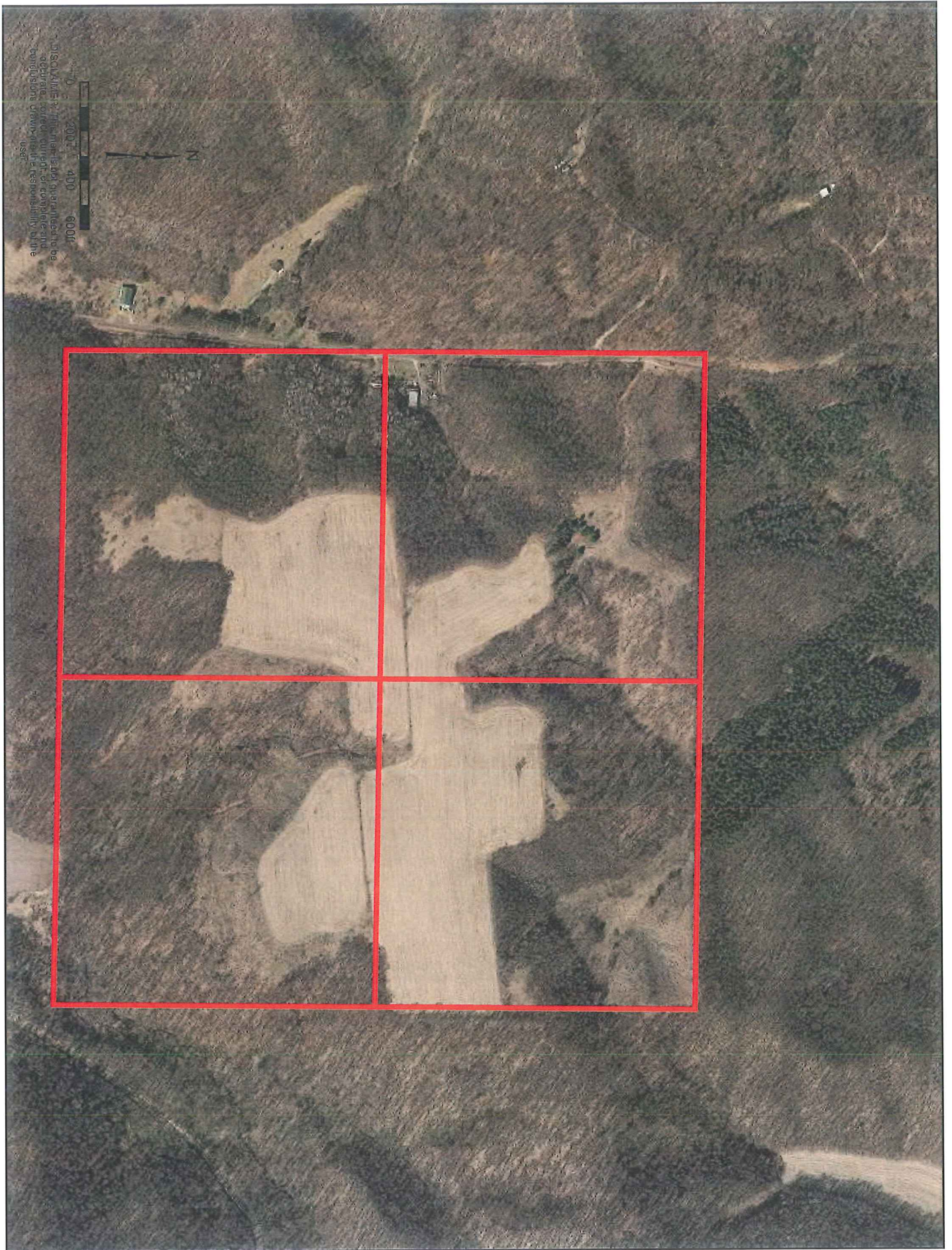


→ N



BIRD HERITAGE PROPERTY

Sections 15
Township 30N Range 12W
Dunn County



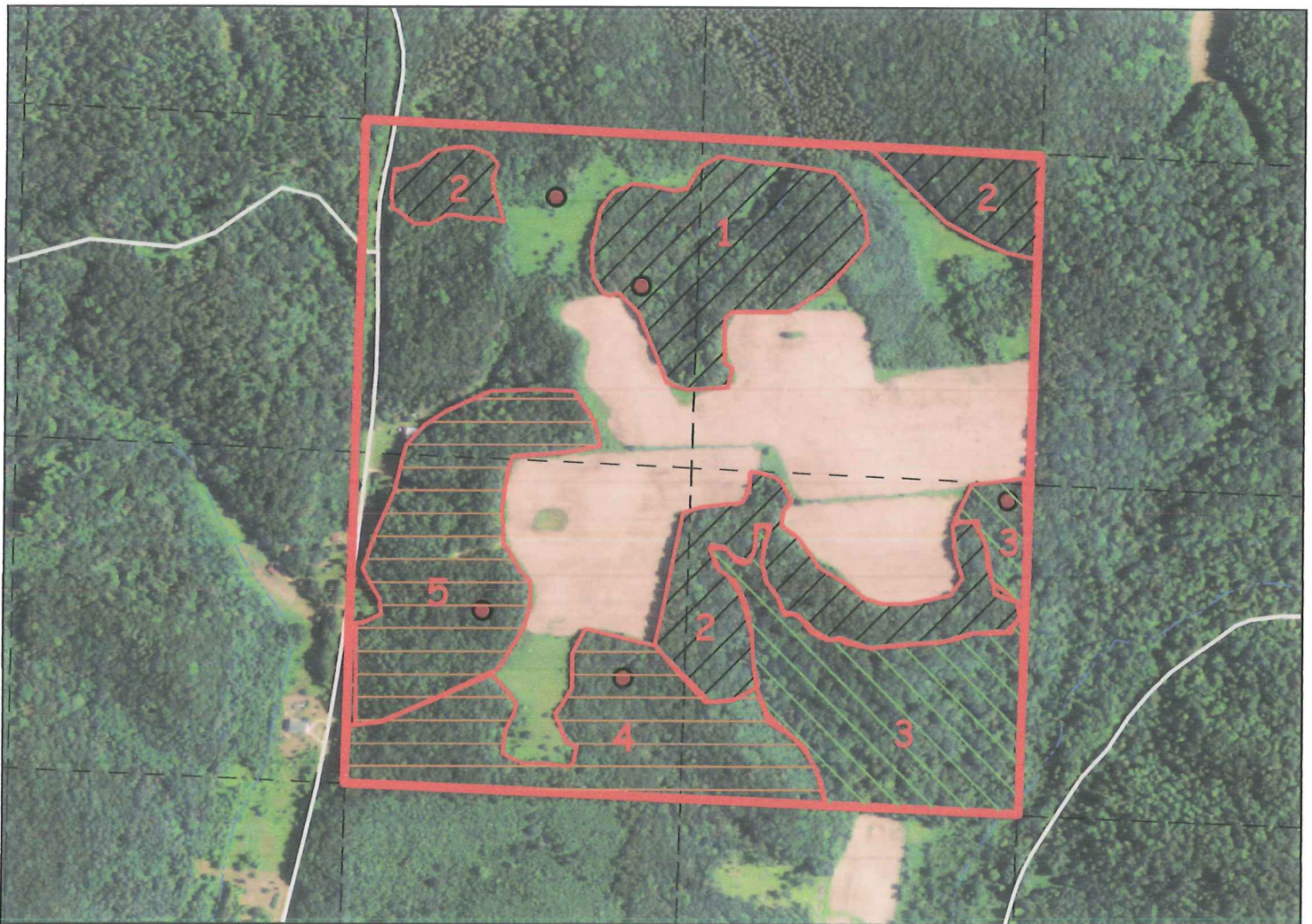
Stand 1 and 2 - 2017 harvest area. Stand 1 was an Oak thinning and stand 2 was Clearcut



Stand 3 - Future proposed clearcut for between 2030 and 2035. Cut all trees 2" or greater leaving a few large diameter white oak per acre for seed source



Stands 4 and 5 - possible overstory removal or thinning area. Can cut at same time as 3 or for next entry into stand 1.



This map is not a survey of the actual boundary of any property this map depicts.

Scale 8" = 1 mile
1:7,920



Map produced by K. Coopman 7/13/2017

Nelson Letter

Stands 4 and 5 have a variety of species but I broke this area into 2 stands. Stand 4 consists of scattered oak that seems to have been thinned in the 2000 entry and a good amount of advanced red maple regeneration. The aspen in this stand is either dead or dying. This stand will convert over to red maple. I recommend either an overstory removal, cutting all the oak and aspen to release the maple or a group selection/ thinning to release the maple and still keep some of the mature oak in the stand. Stand 5 has the same prescription as 4 but has lower quality to it.

Attached is a map that shows a sample prescription for your woods. The clearcut and single tree selection areas can vary depending on what your goals are.

Sincerely,

Kyle Coopman
DNR Forester
Eau Claire Area