



United States  
Department of  
Agriculture

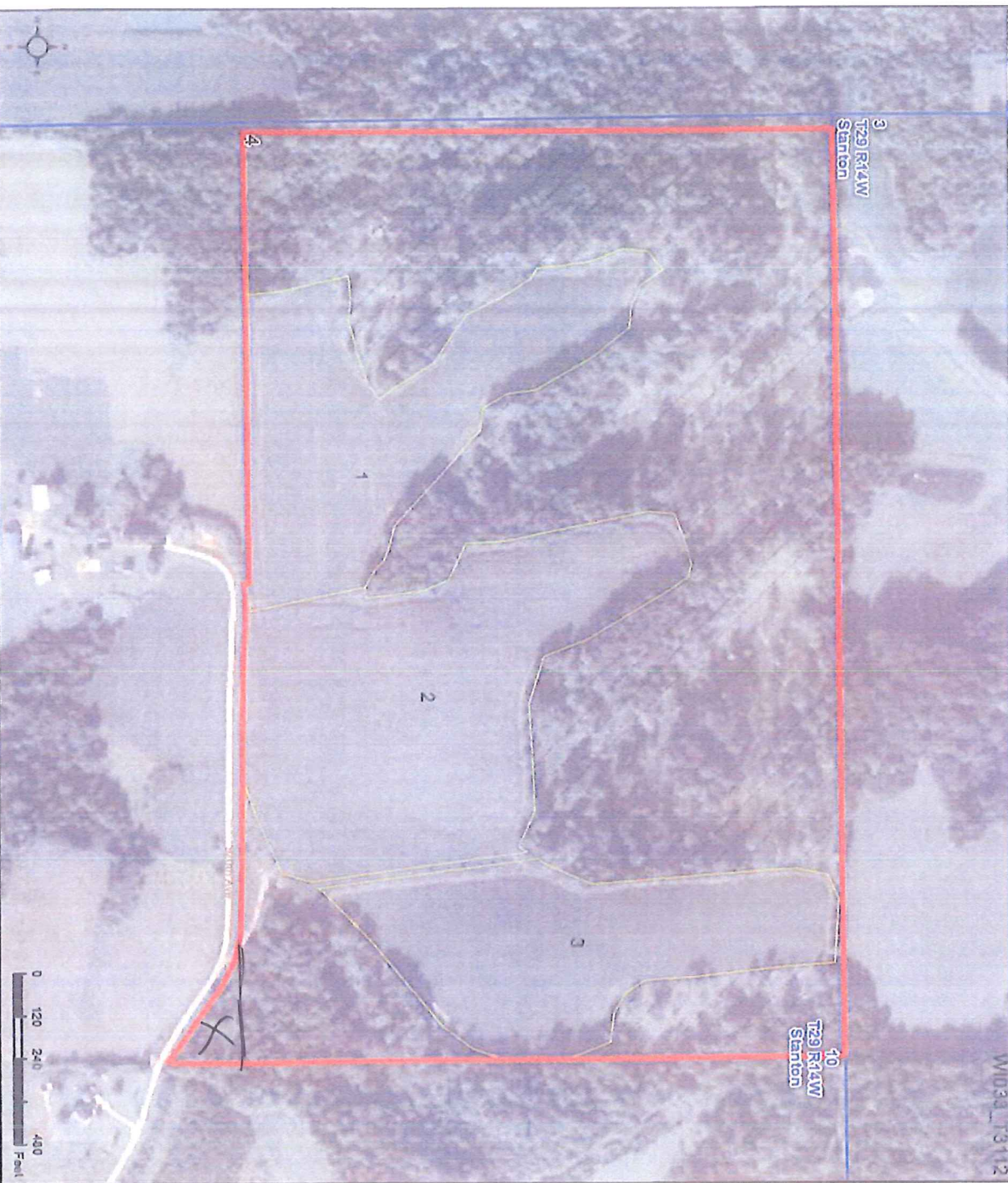
# Dunn County, Wisconsin

Entire Tract: IR / NI GR / FG  
Shares: \_\_\_\_\_ unless otherwise labeled

## Farm 14133 Tract 3112 2020 Program Year

CLU	Acres	HEL	Crop
1	12.62	HEL	Cropland
2	18.01	HEL	Cropland
3	11.6	HEL	Cropland
4	60.69	UHEL	WDA

Page Cropland Total: 42.23 acres



Map Created May 15, 2020

- Common Land Unit**
- Cropland
  - Non-Cropland
  - Tract Boundary
  - PLSS
- NAP Imagery 2018**
- Wetland Determination Identifiers
  - Restricted Use
  - Limited Restrictions
  - Exempt from Conservation
  - Compliance Provisions

USDA FSA maps are for FSA Program administration only. This map does not represent a legal survey or reflect actual ownership; rather it depicts the information provided directly from the producer and/or the NAP imagery. The producer accepts the data "as is" and assumes all risks associated with its use. The USDA Farm Service Agency assumes no responsibility for actual or consequential damage incurred as a result of any user's reliance on this data outside FSA Programs. Wetland identifiers do not represent the size, shape, or specific determination of the area. Refer to your original determination (CPA-026 and attached maps) for exact boundaries and determinations or contact NRCS.