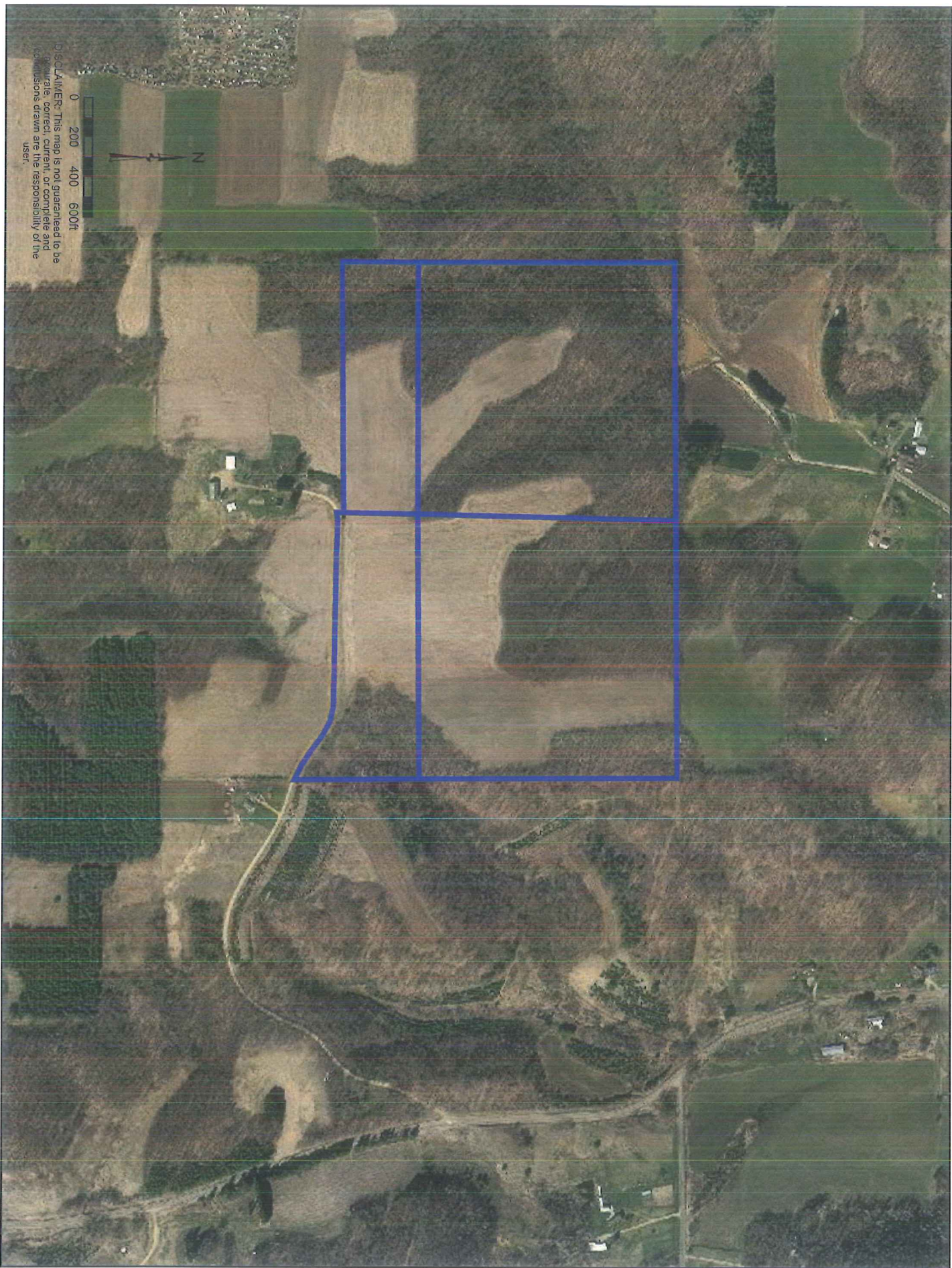


2



DISCLAIMER: This map is not guaranteed to be accurate, correct, current, or complete and no responsibility is assumed for any errors or omissions drawn are the responsibility of the user.



United States
Department of
Agriculture

Dunn County, Wisconsin

Entire Tract: IR / NI GR / FG unless otherwise labeled
Shares: _____

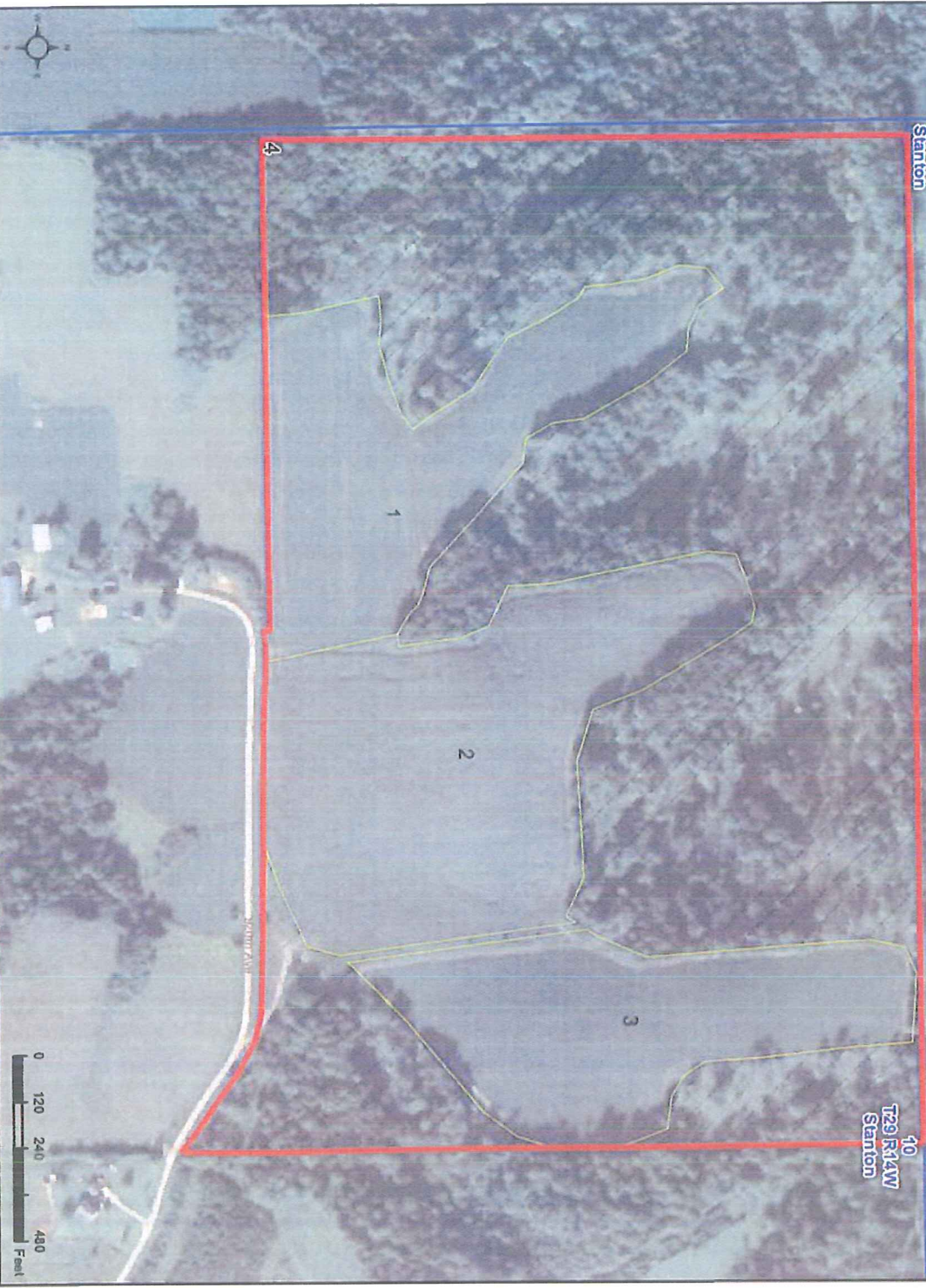
WI033 T3112

Farm 14133 Tract 3112

2020 Program Year

| CLU/Acres | HEL | Crop |
|-----------|------------|----------|
| 1 | 12.62 HEL | Cropland |
| 2 | 18.01 HEL | Cropland |
| 3 | 11.6 HEL | Cropland |
| 4 | 60.69 UHEL | UPLD |

Page Cropland Total: 42.23 acres



- Common Land Unit**
 - Cropland
 - Non-Cropland
- Tract Boundary**
- PLSS**
- NALP Imagery 2018 Wetland Determination Identifiers**
 - Restricted Use
 - Limited Restrictions
 - Exempt from Conservation
 - Compliance Provisions

Map Created May 15, 2020

USDA FSA maps are for FSA Program administration only. This map does not represent a legal survey or reflect actual ownership; rather it depicts the information provided directly from the producer and/or the NALP Imagery. The producer accepts the data as is and assumes all risks associated with its use. The USDA Farm Services Agency assumes no responsibility for actual or consequential damage incurred as a result of any user's reliance on this data outside FSA Programs. Wetland Identifiers do not represent the size, shape, or specific delineation of the area. Refer to your original determination (CPA-026 and attached maps) for exact boundaries and delineations or contact NRCS.