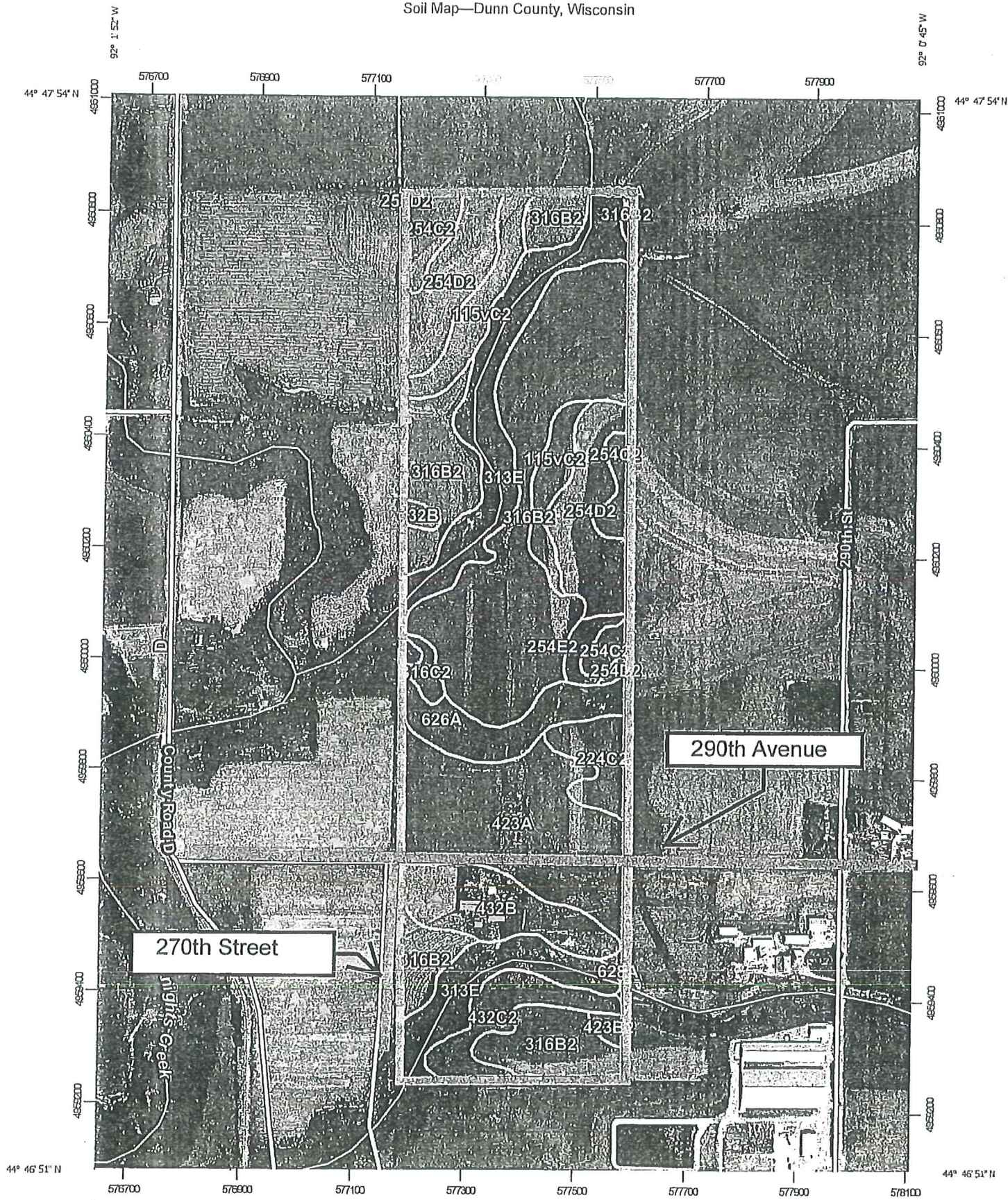


SOIL SURVEY MAP (159.65 ACRES)

Exhibit F-1

Soil Map—Dunn County, Wisconsin



Map Scale: 1:9,380 if printed on A portrait (8.5" x 11") sheet.

0 100 200 400 600 Meters

0 450 900 1800 2700 Feet

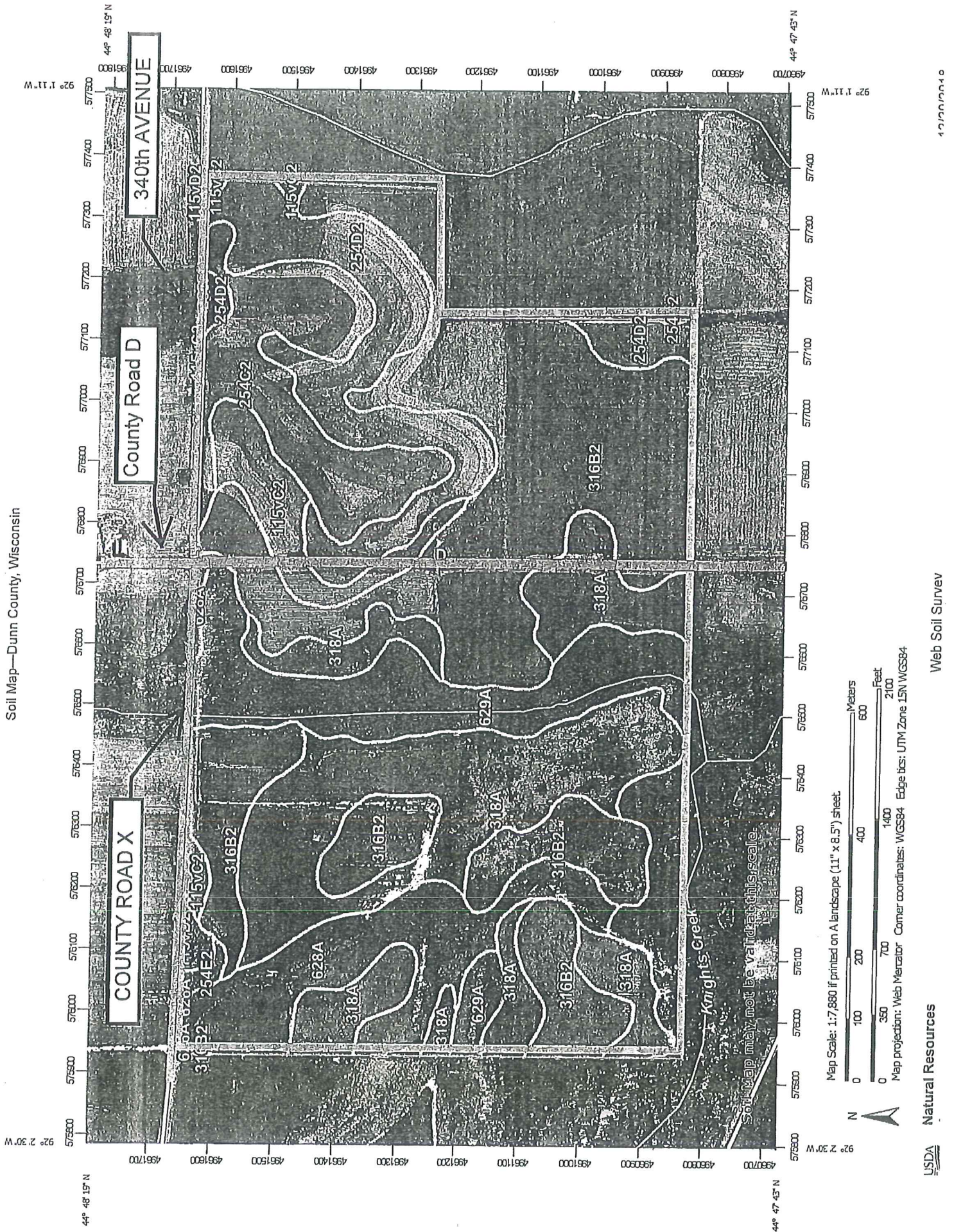
Map projection: Web Mercator Corner coordinates: WGS84 Edge ticks: UTM Zone 15N WGS84



Natural Resources
Conservation Service

Web Soil Survey
National Cooperative Soil Survey

2/15/2019
Page 1 of 3



SOIL SURVEY MAP LEGEND

Map Unit Legend

Map Unit Symbol	Map Unit Name	Acres in AOI	Percent of AOI
115vC2	Seaton silt loam, driftless valley, 6 to 12 percent slopes, moderately eroded	8.8	5.5%
224C2	Elevasil sandy loam, 6 to 12 percent slopes, moderately eroded	4.0	2.5%
254C2	Norden silt loam, 6 to 12 percent slopes, moderately eroded	6.2	3.8%
254D2	Norden silt loam, 12 to 20 percent slopes, moderately eroded	16.8	10.5%
254E2	Norden silt loam, 20 to 30 percent slopes, moderately eroded	1.5	0.9%
313E	Plumcreek silt loam, 20 to 45 percent slopes	23.0	14.3%
316B2	Ella silt loam, 1 to 6 percent slopes, moderately eroded	52.2	32.5%
316C2	Ella silt loam, 6 to 12 percent slopes, moderately eroded	1.3	0.8%
423A	Meridian silt loam, 0 to 3 percent slopes	22.7	14.1%
423B2	Meridian silt loam, 2 to 6 percent slopes, moderately eroded	0.6	0.4%
432B	Kevilar sandy loam, 2 to 6 percent slopes	10.1	6.3%
432C2	Kevilar sandy loam, 6 to 12 percent slopes, moderately eroded	5.8	3.6%
626A	Arenzville silt loam, 0 to 3 percent slopes, occasionally flooded	7.4	4.6%
628A	Orion silt loam, 0 to 3 percent slopes, occasionally flooded	0.2	0.1%
Totals for Area of Interest		160.6	100.0%

SOIL SURVEY MAP LEGEND

Map Unit Legend

Map Unit Symbol	Map Unit Name	Acres in AOI	Percent of AOI
115vC2	Seaton silt loam, driftless valley, 6 to 12 percent slopes, moderately eroded	9.9	3.7%
115vD2	Seaton silt loam, driftless valley, 12 to 20 percent slopes, moderately eroded	1.4	0.5%
254C2	Norden silt loam, 6 to 12 percent slopes, moderately eroded	21.9	8.2%
254D2	Norden silt loam, 12 to 20 percent slopes, moderately eroded	27.7	10.4%
254E2	Norden silt loam, 20 to 30 percent slopes, moderately eroded	0.7	0.3%
255F	Urne fine sandy loam, 30 to 45 percent slopes	0.3	0.1%
316B2	Ella silt loam, 1 to 6 percent slopes, moderately eroded	88.6	33.4%
318A	Bearpen silt loam, 0 to 3 percent slopes, rarely flooded	58.6	22.1%
626A	Arenzville silt loam, 0 to 3 percent slopes, occasionally flooded	0.1	0.0%
628A	Orion silt loam, 0 to 3 percent slopes, occasionally flooded	21.6	8.2%
629A	Etrick silt loam, 0 to 2 percent slopes, frequently flooded	34.7	13.1%
Totals for Area of Interest		265.3	100.0%