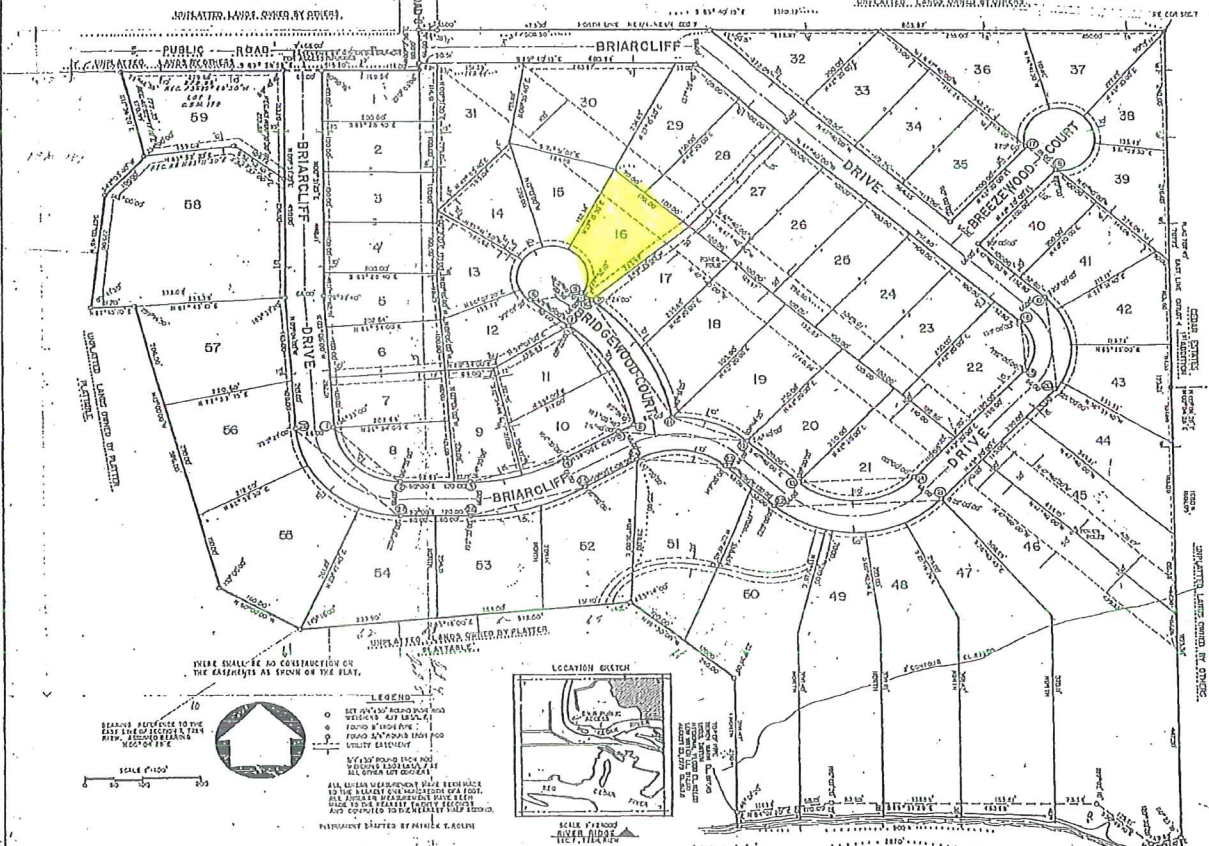


# RIVER RIDGE

LOCATED IN THE NE 1/4 OF THE NE 1/4, SE 1/4 OF THE NE 1/4 (GOVT LOT 4) & THE NW 1/4 OF THE NE 1/4 (GOVT LOT 5) SECTION 7, T29N, R12W, TOWN OF RED CEDAR, COUNTY OF DUNN, STATE OF WISCONSIN



CURVE NO.	LOT NO.	RADIUS	CHORD	ARC	CHORD BEARING	CENTRAL ANGLE	TANGENT BEARING
1-2	116.23	152.87	172.69	116.23	S. 85° 51' 10" W.	8.60° 00' 00"	S. 85° 51' 10" W.
3-4	111.24	171.70	172.69	111.24	N. 85° 51' 10" E.	8.60° 00' 00"	N. 85° 51' 10" E.
5-6	111.24	171.70	172.69	111.24	N. 85° 51' 10" E.	8.60° 00' 00"	N. 85° 51' 10" E.
6-7	111.24	171.70	172.69	111.24	N. 85° 51' 10" E.	8.60° 00' 00"	N. 85° 51' 10" E.
7-8	111.24	171.70	172.69	111.24	N. 85° 51' 10" E.	8.60° 00' 00"	N. 85° 51' 10" E.
8-9	111.24	171.70	172.69	111.24	N. 85° 51' 10" E.	8.60° 00' 00"	N. 85° 51' 10" E.
9-10	111.24	171.70	172.69	111.24	N. 85° 51' 10" E.	8.60° 00' 00"	N. 85° 51' 10" E.
10-11	111.24	171.70	172.69	111.24	N. 85° 51' 10" E.	8.60° 00' 00"	N. 85° 51' 10" E.
11-12	111.24	171.70	172.69	111.24	N. 85° 51' 10" E.	8.60° 00' 00"	N. 85° 51' 10" E.
12-13	111.24	171.70	172.69	111.24	N. 85° 51' 10" E.	8.60° 00' 00"	N. 85° 51' 10" E.
13-14	111.24	171.70	172.69	111.24	N. 85° 51' 10" E.	8.60° 00' 00"	N. 85° 51' 10" E.
14-15	111.24	171.70	172.69	111.24	N. 85° 51' 10" E.	8.60° 00' 00"	N. 85° 51' 10" E.
15-16	111.24	171.70	172.69	111.24	N. 85° 51' 10" E.	8.60° 00' 00"	N. 85° 51' 10" E.

CURVE NO.	LOT NO.	RADIUS	CHORD	ARC	CHORD BEARING	CENTRAL ANGLE	TANGENT BEARING
17-18	116.23	152.87	172.69	116.23	S. 85° 51' 10" W.	8.60° 00' 00"	S. 85° 51' 10" W.
18-19	111.24	171.70	172.69	111.24	N. 85° 51' 10" E.	8.60° 00' 00"	N. 85° 51' 10" E.
19-20	111.24	171.70	172.69	111.24	N. 85° 51' 10" E.	8.60° 00' 00"	N. 85° 51' 10" E.
20-21	111.24	171.70	172.69	111.24	N. 85° 51' 10" E.	8.60° 00' 00"	N. 85° 51' 10" E.
21-22	111.24	171.70	172.69	111.24	N. 85° 51' 10" E.	8.60° 00' 00"	N. 85° 51' 10" E.
22-23	111.24	171.70	172.69	111.24	N. 85° 51' 10" E.	8.60° 00' 00"	N. 85° 51' 10" E.
23-24	111.24	171.70	172.69	111.24	N. 85° 51' 10" E.	8.60° 00' 00"	N. 85° 51' 10" E.
24-25	111.24	171.70	172.69	111.24	N. 85° 51' 10" E.	8.60° 00' 00"	N. 85° 51' 10" E.
25-26	111.24	171.70	172.69	111.24	N. 85° 51' 10" E.	8.60° 00' 00"	N. 85° 51' 10" E.
26-27	111.24	171.70	172.69	111.24	N. 85° 51' 10" E.	8.60° 00' 00"	N. 85° 51' 10" E.
27-28	111.24	171.70	172.69	111.24	N. 85° 51' 10" E.	8.60° 00' 00"	N. 85° 51' 10" E.
28-29	111.24	171.70	172.69	111.24	N. 85° 51' 10" E.	8.60° 00' 00"	N. 85° 51' 10" E.
29-30	111.24	171.70	172.69	111.24	N. 85° 51' 10" E.	8.60° 00' 00"	N. 85° 51' 10" E.
30-31	111.24	171.70	172.69	111.24	N. 85° 51' 10" E.	8.60° 00' 00"	N. 85° 51' 10" E.
31-32	111.24	171.70	172.69	111.24	N. 85° 51' 10" E.	8.60° 00' 00"	N. 85° 51' 10" E.
32-33	111.24	171.70	172.69	111.24	N. 85° 51' 10" E.	8.60° 00' 00"	N. 85° 51' 10" E.
33-34	111.24	171.70	172.69	111.24	N. 85° 51' 10" E.	8.60° 00' 00"	N. 85° 51' 10" E.
34-35	111.24	171.70	172.69	111.24	N. 85° 51' 10" E.	8.60° 00' 00"	N. 85° 51' 10" E.
35-36	111.24	171.70	172.69	111.24	N. 85° 51' 10" E.	8.60° 00' 00"	N. 85° 51' 10" E.
36-37	111.24	171.70	172.69	111.24	N. 85° 51' 10" E.	8.60° 00' 00"	N. 85° 51' 10" E.
37-38	111.24	171.70	172.69	111.24	N. 85° 51' 10" E.	8.60° 00' 00"	N. 85° 51' 10" E.
38-39	111.24	171.70	172.69	111.24	N. 85° 51' 10" E.	8.60° 00' 00"	N. 85° 51' 10" E.
39-40	111.24	171.70	172.69	111.24	N. 85° 51' 10" E.	8.60° 00' 00"	N. 85° 51' 10" E.
40-41	111.24	171.70	172.69	111.24	N. 85° 51' 10" E.	8.60° 00' 00"	N. 85° 51' 10" E.
41-42	111.24	171.70	172.69	111.24	N. 85° 51' 10" E.	8.60° 00' 00"	N. 85° 51' 10" E.
42-43	111.24	171.70	172.69	111.24	N. 85° 51' 10" E.	8.60° 00' 00"	N. 85° 51' 10" E.
43-44	111.24	171.70	172.69	111.24	N. 85° 51' 10" E.	8.60° 00' 00"	N. 85° 51' 10" E.
44-45	111.24	171.70	172.69	111.24	N. 85° 51' 10" E.	8.60° 00' 00"	N. 85° 51' 10" E.
45-46	111.24	171.70	172.69	111.24	N. 85° 51' 10" E.	8.60° 00' 00"	N. 85° 51' 10" E.
46-47	111.24	171.70	172.69	111.24	N. 85° 51' 10" E.	8.60° 00' 00"	N. 85° 51' 10" E.
47-48	111.24	171.70	172.69	111.24	N. 85° 51' 10" E.	8.60° 00' 00"	N. 85° 51' 10" E.
48-49	111.24	171.70	172.69	111.24	N. 85° 51' 10" E.	8.60° 00' 00"	N. 85° 51' 10" E.
49-50	111.24	171.70	172.69	111.24	N. 85° 51' 10" E.	8.60° 00' 00"	N. 85° 51' 10" E.

331612

REGISTER'S OFFICE  
DUNN COUNTY, WISCONSIN  
PLAT NO. 331612  
Dated this 24th day of August, 1975  
at Red Cedar, Wisconsin  
*Robert J. ...*

There are no objections to this plat being filed to Secs. 224.15, 224.16, 224.17 and 224.18 (1) and (2), Wis. Stats., and Ch. 65 of the Wis. Admin. Code as provided by Sec. 224.12 (1), V.L. Code.  
Certified true and correct by ...  
*Robert J. ...*  
Department of Local Affairs & Development



AUGUST 24, 1975

SHEET 1 OF 2

PAGE 74