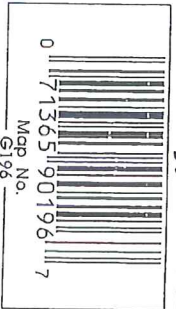


# TANTER LAKE

Dunn County, Wisconsin



Walleye action can be good during spring in the upper reaches of the Red Cedar River. Jig/minnow combos produce the most fish.

Russian Slough produces some nice northern pike and early-ice walleye.



Copyright ©  
Fishing Hot Spots, Inc.  
Rhinelander, WI 54501  
1-800-338-5957

**WATERPROOF!**

This bay is a real sleeper for walleye and smallmouth. Work the entire area with Lindy Rigs tipped with leeches.

Boat landing, shallow, gravel ramp with angled parking.

Spring crappie are taken along the shoreline timber on bobber rigs tipped with small minnows.

Boaters should navigate with caution when entering the snailow entrance to the river.

Work the edges of the shallow reed island for crappie during summer evenings.

Over 100 cribs were placed along this shoreline between 1989-90. These can be "hot" for all species.

Crappie and spring walleye can be found along the trees and deadheads.

This sharp-breaking shoreline drops quickly into the old river channel and holds spring and fall walleye. Work jig and live bait offerings or crankbaits along shore at night.

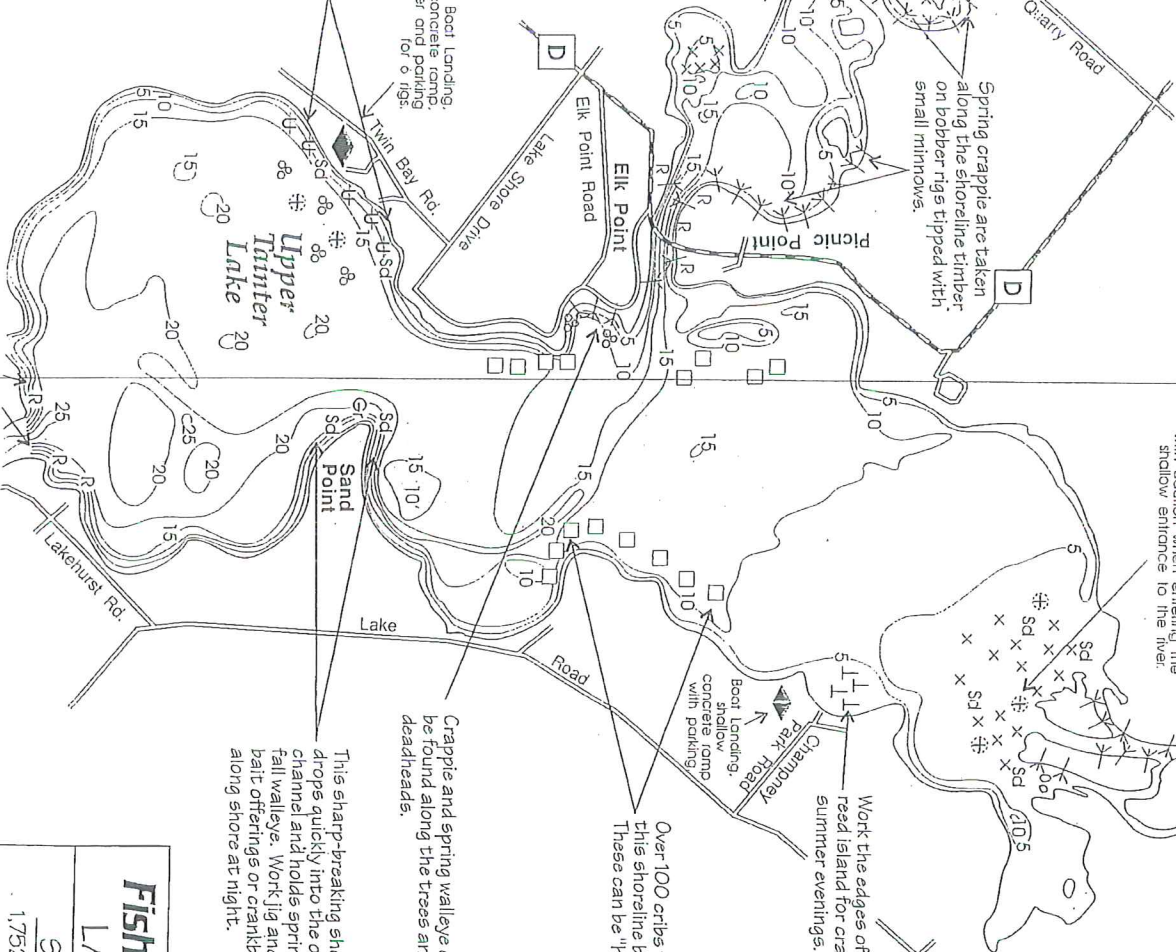
This quality fishing map is printed on WATERPROOF paper. Reproduction without permission from Fishing Hot Spots, Inc. is prohibited.

A sharp-breaking 5-foot edge and numerous brush shelters hold summer crappie. Slip bobber rigs with small minnows or jig/plastics take fish.

Boat landing, concrete ramp, pier and parking for 6 rigs.

## LEGEND

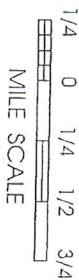
- Mk - Muck
- Sd - Sand
- Gr - Gravel
- Rock danger to navigate
- Downed timber
- Brush shelters



**Fishing Hot Spots®**  
LAKE PROFILE

SIZE AND DEPTH:  
1,752 acres with a maximum  
depth of 16 feet

Fishing information  
provided by  
STEVE AMBERG,  
Menomonee, WI.



This inlet bay attracts spring crappie. Look to the deadfalls along the northwest shoreline to hold the most fish.

The steep ledges of the narrows are excellent habitat for smallmouth bass. A deep hole at the mouth of Lambs Creek holds fall walleye.

northern pike are taken along the rocky mouth to the narrows leading into Lower Tainter.

★ Best landing on lake.

Boat Landing, paved ramp with parking for 5 rigs.

Cast crankbaits over this 10-foot flat for walleye. Evenings and early mornings are best.

Boat Landing, gravel ramp with limited parking.

Pine Point

Pine Point Road

Lower Tainter Lake

The steep drops along this shoreline are overlooked by most anglers. Good numbers of smallmouth bass are found here. Try Gitzits or 6-inch plastic worms in metal flake or blue.

NOT FOR NAVIGATION

Walleye, smallmouth bass, crappie, and northern pike.

WATER:

Quite fertile and brownish in color. A heavy summer algae bloom is common.

BOTTOM:

65% sand, 25% silt, 5% gravel and 5% bedrock.

VEGETATION:

Aside from shallow areas around river mouths, weed cover is minimal.

FORAGE:

Logperch, trout perch, shiner, redbreast and white sucker.

# FISHING TIPS

1. Walleye action is best on Tainter Lake during spring and fall. Most fish are taken in less than 10 feet of water due to heavy algae blooms. Concentrate on the river inlets during spring.
2. Due to the lack of natural cover, numerous cribs and brush shelters have been placed in the lake since 1958. "Crib jumping" can be very effective for all species. Don't spend a lot of time in one spot; keep moving until you locate fish.
3. Black crappie are available in good numbers and have above average growth rates. In spring, look to the north sides of shallow bays to hold spawning fish. In summer, crappie will suspend near cribs and steep shorelines.
4. The Hay River provides wonderful scenery and fishing. Deadfalls line the shore and produce nice smallmouth bass, walleye and crappie. A float trip from Wheeler to the northwest landing takes about 2-1 1/2 hours.





# TAINTER LAKE

AREA 1,608.2 Acres  
 1,658.4 Acres with Islands  
 Under 3 Feet 369.3 Acres 23.0%  
 Over 20 Feet 286.8 Acres 17.8%  
 VOLUME 20,242 Acre Feet  
 SHORELINE 24.42 Miles  
 Not Including Islands  
 MAXIMUM DEPTH 36 Feet

Sections 16,17,20,21,22,29,30 & 31  
 Tainter Township 29N Range 12W

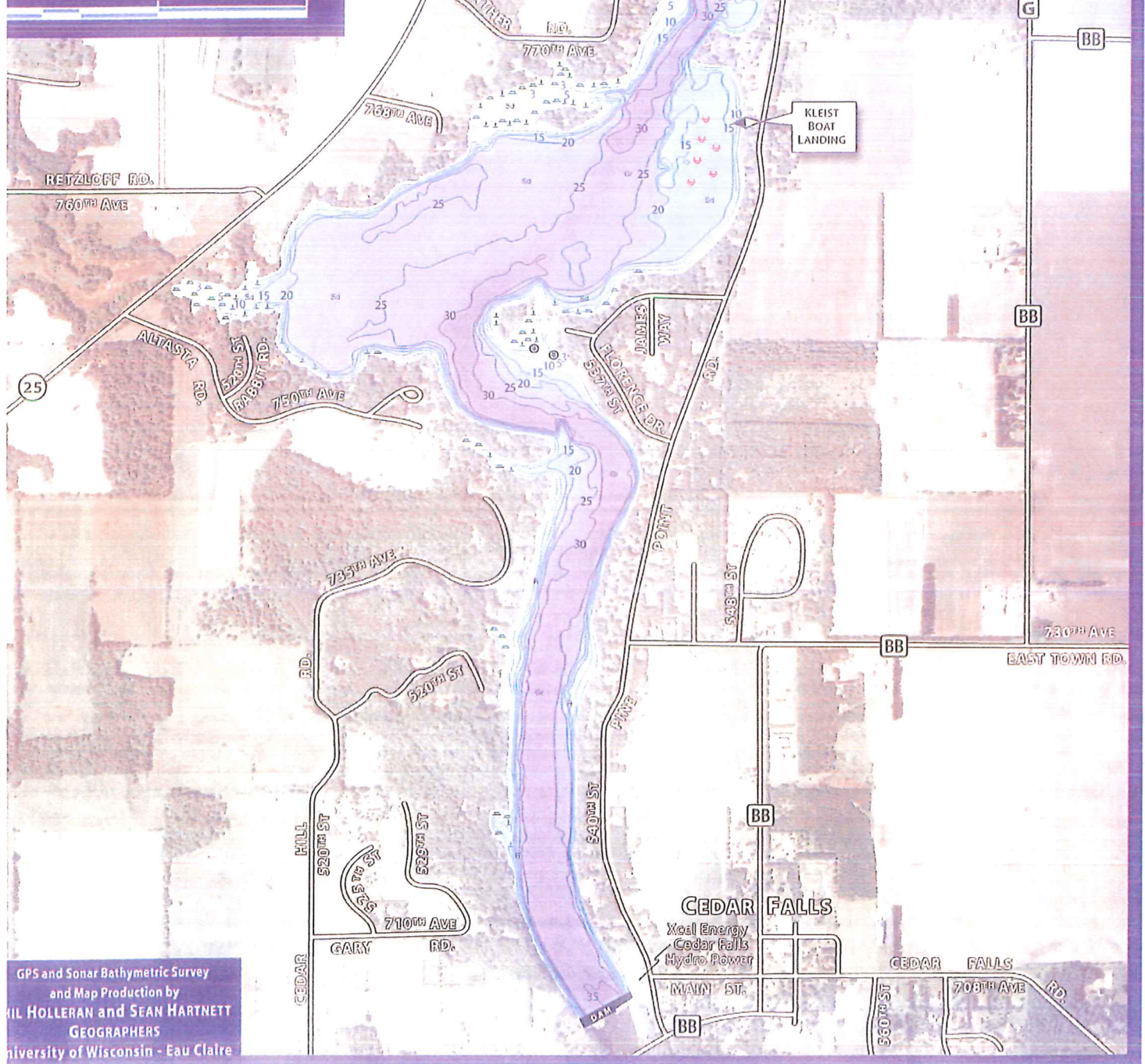
Section 36  
 Sherman Township 29N Range 13W

Section 6  
 Red Cedar Township 28N Range 12W  
 DUNN COUNTY

SPECIES OF FISH	COMMON	PRESENT
MUSKIE		X
WALLEYE	X	
NORTHERN PIKE		X
LARGemouth BASS		X
SMALLMOUTH BASS	X	
PANFISH		X

↑ UPPER TAINTER MAP ↑

0 .25 .5 Miles



GPS and Sonar Bathymetric Survey  
 and Map Production by  
 HIL HOLLERAN and SEAN HARTNETT  
 GEOGRAPHERS  
 University of Wisconsin - Eau Claire

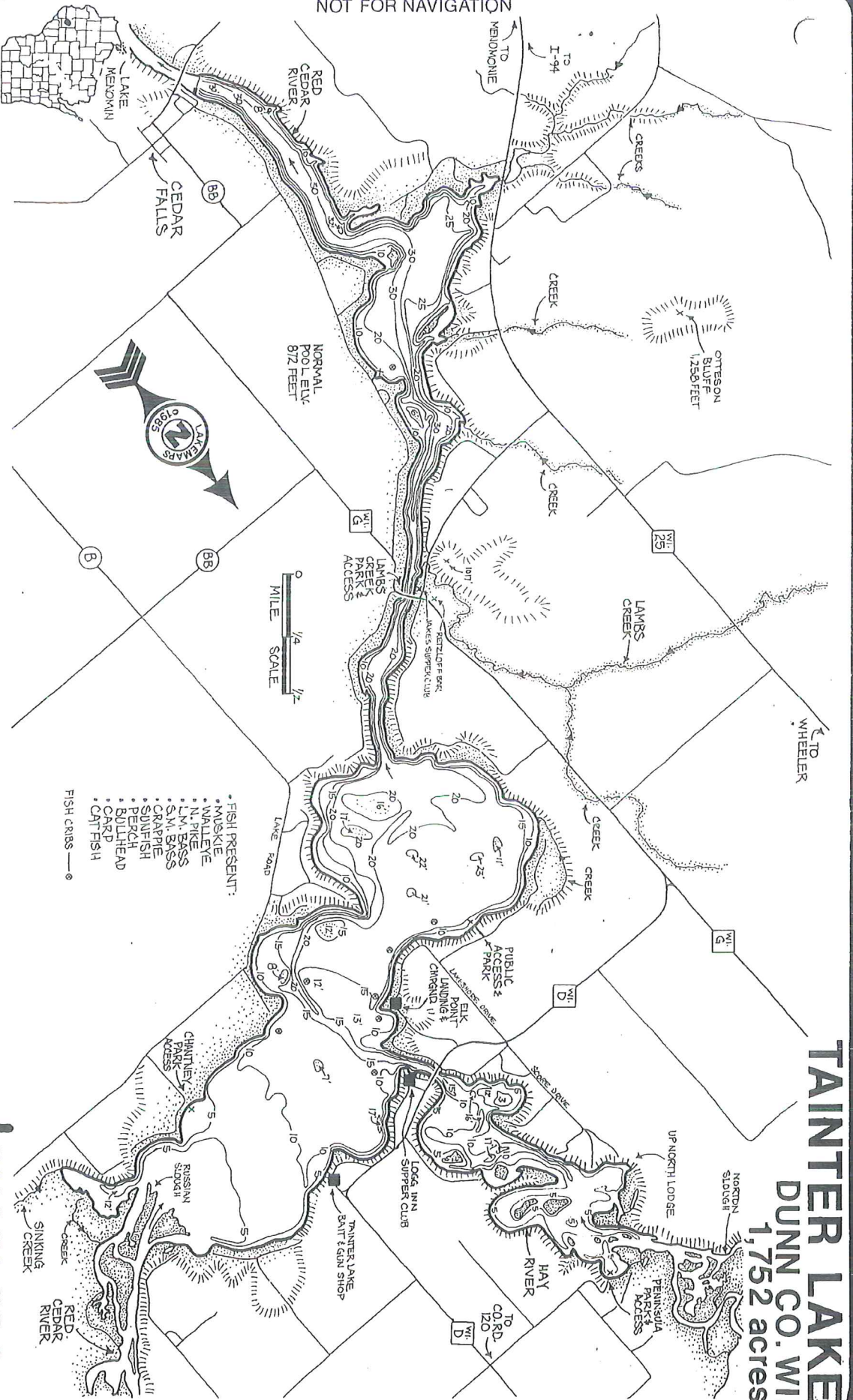


NOT FOR NAVIGATION

DNR DATA UTILIZED

THIS LAKE, AND OVER 1500 LAKES, ARE AVAILABLE ON WATERPROOF PLASTIC. FOR A FREE LIST, SEND TO LAKE MAPS, PO BOX 80087 MPLS., MN. 55408 (612) 824-9928

**lakemaps**



**TAINTER LAKE**  
DUNN CO. WI.  
1,752 acres