

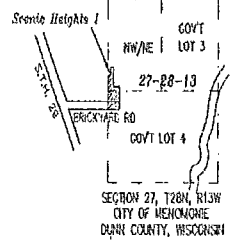
Scenic Heights I

PART OF LOT 1, C.S.M. No. 2811
VOLUME 12, PAGE 161.

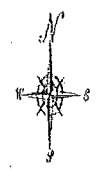
LOCATED IN THE NW 1/4 OF THE NE 1/4, AND PART OF GOVERNMENT LOT 4,
SECTION 27, TOWNSHIP 28 NORTH, RANGE 13 WEST
CITY OF MENOMONIE, DUNN COUNTY, WISCONSIN

DOCUMENT NUMBER 537273
REC'D SEPTEMBER 12, 2006 AT 10:15 AM
RECORDED: VOLUME B, PLATS, PAGE 78
James M. Madoff
JAMES M. MADOFF, ACS. OF DEEDS, DUNN CO. WI.

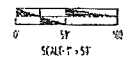
LOCATION SKETCH
NOT TO SCALE



SURVEYOR'S NOTE:
The portion of the 65' wide highway/express easement within the shaded area of SCENIC HEIGHTS I shown on C.S.M. 2811, is to relinquish to the use of the recording of the plat of SCENIC HEIGHTS I. The remainder of the 65' wide highway/express easement is retained for access to an existing parcel, Lot 2, C.S.M. 2811.



BEARING BASED ON THE WEST LINE OF THE R 13, SEC 27, T28N, R13W, DUNN COUNTY COORDINATE SYSTEM



LEGEND

- GOVERNMENT CENTER (AS SHOWN)
- SET 1 1/4" 18" FROM BAY
- RECORD 130 LBS. UNDER FOOT AT ALL CORNERS OF CORNERS

There are no objections to this plat with respect to Sects 23.14, 23.16, 23.20 and 23.41(1) and (2), Wis. Stat. as provided by s. 234.12, Wis. Stat.

James M. Madoff
Department of Agriculture, Trade and Consumer Protection

CURVE DATA

CURVE NUMBER	LOT NUMBER	CHORD	ARC LENGTH	CHORD BEARING	CHORD BEARING	BACK SIGHT	FORE SIGHT
1-1	LOT 13	26.97	33.57	45.32°	341.26°	341.26°	341.26°
1-2	LOT 15	32.67	37.74	35.37°	341.26°	341.26°	341.26°
1-3	LOT 15	32.67	37.74	35.37°	341.26°	341.26°	341.26°
1-4	LOT 15	32.67	37.74	35.37°	341.26°	341.26°	341.26°
1-5	LOT 15	32.67	37.74	35.37°	341.26°	341.26°	341.26°
1-6	LOT 15	32.67	37.74	35.37°	341.26°	341.26°	341.26°
1-7	LOT 15	32.67	37.74	35.37°	341.26°	341.26°	341.26°
1-8	LOT 15	32.67	37.74	35.37°	341.26°	341.26°	341.26°
1-9	LOT 15	32.67	37.74	35.37°	341.26°	341.26°	341.26°
1-10	LOT 15	32.67	37.74	35.37°	341.26°	341.26°	341.26°
1-11	LOT 15	32.67	37.74	35.37°	341.26°	341.26°	341.26°
1-12	LOT 15	32.67	37.74	35.37°	341.26°	341.26°	341.26°
1-13	LOT 15	32.67	37.74	35.37°	341.26°	341.26°	341.26°
1-14	LOT 15	32.67	37.74	35.37°	341.26°	341.26°	341.26°
1-15	LOT 15	32.67	37.74	35.37°	341.26°	341.26°	341.26°
1-16	LOT 15	32.67	37.74	35.37°	341.26°	341.26°	341.26°
1-17	LOT 15	32.67	37.74	35.37°	341.26°	341.26°	341.26°
1-18	LOT 15	32.67	37.74	35.37°	341.26°	341.26°	341.26°
1-19	LOT 15	32.67	37.74	35.37°	341.26°	341.26°	341.26°
1-20	LOT 15	32.67	37.74	35.37°	341.26°	341.26°	341.26°
1-21	LOT 15	32.67	37.74	35.37°	341.26°	341.26°	341.26°
1-22	LOT 15	32.67	37.74	35.37°	341.26°	341.26°	341.26°
1-23	LOT 15	32.67	37.74	35.37°	341.26°	341.26°	341.26°
1-24	LOT 15	32.67	37.74	35.37°	341.26°	341.26°	341.26°
1-25	LOT 15	32.67	37.74	35.37°	341.26°	341.26°	341.26°
1-26	LOT 15	32.67	37.74	35.37°	341.26°	341.26°	341.26°
1-27	LOT 15	32.67	37.74	35.37°	341.26°	341.26°	341.26°
1-28	LOT 15	32.67	37.74	35.37°	341.26°	341.26°	341.26°
1-29	LOT 15	32.67	37.74	35.37°	341.26°	341.26°	341.26°
1-30	LOT 15	32.67	37.74	35.37°	341.26°	341.26°	341.26°